



Honor Society of Nursing
Sigma Theta Tau International

Spring 2007

NU MU Chapter

California State University, Los Angeles

Nu Mu Chapter Board of Directors:

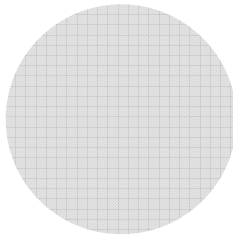
Suzanne Taylor-President

Larissa Africa-President Elect

Benson Yeung-Vice President

Tracy Paz-Secretary

Kris Hillary-Treasurer



Individual Highlights:

President's Message	2
Treasurer Report	3
Web Site Update	3
Special Events	4
Induction	5

ELECTION TIME: WILL YOU VOLUNTEER TO SERVE???

Yuri Ogawa, MSN, RN

It's that time of year again for all NU MU members of the Honor Society of Sigma Theta Tau International: **Elections!!**

Time Commitment:

- Willing to serve for a two- year term
- Attend Board meetings: held every other month (6 times/year)
- Attend annual Induction ceremony
- Attend annual Spring and Fall NU MU scholarly programs
- Support the activities of our chapter
- Support NU MU Board decisions

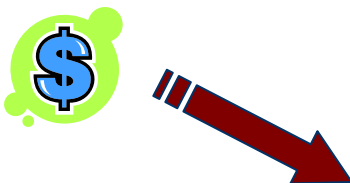
We are looking for candidates for the following **elected positions:**

- (1) Bylaws Chair; and
- (2) Two members to serve as Leadership Succession committee members (formerly known as the Nominating committee).

Additionally, we need positions filled for the following **appointed positions:**

- (1) Publicity Chair (newsletter editor/website chair); and
- (2) Awards/Scholarship Chair

We really need your expertise. Please give back to your profession by applying for these important positions on our NU MU Board!! Contact Yuri Ogawa, MSN, RN, Chair of the Leadership Succession Committee at yuriogawa5@yahoo.com or at 310-327-6635 by **March 22, 2007**. Thank You.



RESEARCH GRANT AVAILABLE

Nu Mu is offering funding up to **\$1000** for a qualified research project. Preference will be given to Nu Mu members, other attributes being equal. Contact ljudson@calstatela.edu for information regarding application and research proposal guidelines. The deadline for application is **May 7, 2007**.



President's Message

By Suzanne Taylor, RN, MSN, EMT-B

Have you ever had a really great idea that you were passionate about and had full intentions of implementing but somehow it just never got done? I've had several and there just never seems to be enough time these days to accomplish all the things I set out to do. Even though we are months past making New Year's resolutions, I've got one idea for you that you might want to consider implementing for Nurse's Week. Maybe you've set goals for yourself to attend more conferences, get involved in/learn more about nursing research or being more active in our Nu Mu chapter. Maybe you are mentoring someone right now and could use a good idea or two on how to get them involved with different nursing issues. A great opportunity is coming your way on Monday, May 14th through the CSULA Nursing Research Conference. The Nu Mu chapter of Sigma Theta Tau, the School of Nursing at CSULA, and the Alumni Association are collaborating in conjunction with many area hospitals in presenting a 6-hour conference highlighting evidence-based practice research and topics. Dr. Linda Burnes-Bolton will be the keynote speaker along with other notable researchers. Research posters will be displayed and continuing education contact hours will be offered for attendance. Why not decide right now to make plans to attend this conference, learn about EBP research and support your Nu Mu chapter? Since this is being held the Monday after Nurse's Week, use this opportunity to get other nurses involved in this conference and help ignite their passion for nursing research. Buy extra tickets to this conference and insert them in cards for those special nurses during Nurse's Week. Use tickets as raffle drawing prizes, rewards or any number of other ideas that you could use to give nurses the opportunity to attend this conference.



Florence Nightingale said in 1852,
*'Women never have a half-hour in
 all their lives
 (excepting before or after
 anybody is up in the
 house) that they can call their
 own, without fear
 of offending or of hurting
 someone. Why do people
 sit up so late, or, more rarely,
 get up so early? Not
 because the day is not long
 enough, but because
 they have 'no time in the day to
 themselves.'*



Make a resolution to take 6 hours of the day on May 14th to do something good and profitable for yourself and for your fellow nurses. Nurse's Week is an occasion to be honored and what better way to do that than to take a great idea and follow through on it! Additional information on how to register for this conference will be mailed to you soon.



I am always available to our members if you ever have any questions or comments or if you would like to be more involved in our chapter. Please feel free to call me at 323-660-2450 Ext. 5090 or email me at sutaylor@chla.usc.edu.

Note from the Treasurer

Kris Hillary, MSN, RN

It is a pleasure to report that Sigma Theta Tau Nu Mu chapter currently has \$48,737 in assets. Our operating budget for 2007 is \$14,170. Money for the budget comes from dues and from fundraising efforts. The budget supports the Regional Research Conference; the Fall, Spring and Induction Programs; sending two chapter representatives to National Sigma Theta Tau Leadership Conference; underwriting students attendance at the Regional Research Conference and awarding \$4500 in scholarships.

Thank you all for your generosity in supporting Nu Mu's fundraising activities this year. So far \$3781 has been donated by our membership. Through your gifts we have been able to increase the number and amount of scholarships given each year and in addition underwrite educational programs available to all students at CSULA.

Sincerely,
Kris Hillary

Electronically Serving You... a new look for the Nu Mu website

Tracy Paz, MSN, RN, EMT-B



The Nu Mu chapter website will have a completely new look this spring! Our address is <http://www.numula.org/> and it will be expanding through the technical wizardry of our new Webmaster, Paul Roger at Effective By Design. We invite you to take a look at it frequently over the next few months as the site is built.

Our previous website, <http://www.geocities.com/numuchapter/>, is still up and running, but will not be updated further and will cease as soon as our new site is finalized.

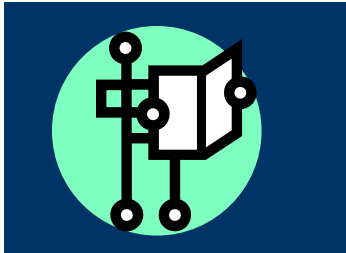
Attention...

Are you a leader? Do you have ideas or issues you would like to discuss and work with others who have similar ideas? If so we are looking for you. Our committees have several positions available that would meet your needs and we would love your involvement and contribution. Please contact Suzanne Taylor at sutaylor@chla.usc.edu for committee positions available.

Don't forget to sign up to receive the next issue of Sigma Theta Tau Nu Mu Chapter Newsletter via **email**. Help us to help you and our chapter function more efficiently. Contact lafrica@chla.usc.edu with the email address for which you would like to receive your next issue.

SPECIAL EVENTS....

GET YOUR CALENDARS OUT!

**Are you in need of CEUs???**

Lori Judson, PhD, RN

... or interested in learning more about Evidence-Based Practice? If yes, STTI Nu Mu Chapter in conjunction with CSULA School of Nursing and CSULA's Alumni Association will hold a Nursing Research conference at CSULA.

The focus of the conference will be Evidence-Based Practice (EBP). The keynote speaker will be **Linda Burnes Bolton, DrPH, RN, FAAN**. Dr. Burnes Bolton is the Vice President and Chief Nursing Officer of Cedars Sinai Medical Center and current President of the American Academy for Nursing. Two other speakers will round out the morning, and after lunch poster viewing will take place. All CSULA SON students will attend this event and area hospital personnel will be invited to attend and present posters as well. CEU's will be available. Brochures will be mailed soon, so plan now to attend.

"Leadership is not wielding authority; it's empowering people."
--Becky Brodin

When: **Monday, May 14**Where: **Golden Eagle Ballroom at CSULA**Time: **8 AM to 2 PM****Scholarship Applications Now Available**

Some of you may have already seen the flyers around campus about the Scholarship available through Nu Mu. Nu Mu is currently accepting scholarship applications. Applications are available in the Nursing Office and are due to Darlene Finnochiaro by **April 16th**.

If you are interested, please make sure to fill out an application early as you will also be required to obtain references. The scholarship awardees will be contacted by phone to attend the Induction Ceremony on May 19th to receive the Scholarship money.

For more questions, please contact Lisa Vallejo at (626) 441-2051

Sunny San Diego.. . Here we come!
Yuri Ogawa, MSN, RN**October 18-19, 2007 - San Diego, CA**

The **2007 Joint Chapters of Southern California Regional STTI Research Conference** (Nursing Odyssey 2007) will be held in San Diego on October 18-19 this year. Keynote speaker will be Carol Jorgensen Huston, STTI President-Elect. Save the date...plan on attending a great conference with CE hours; interesting, innovative speakers; and great food! Lorie Judson and Yuri Ogawa serve on the Marketing Subcommittee for Nursing Odyssey.



Induction Once Again
Dolores Greenwood MSN, RN

Do you remember your induction to Sigma Theta Tau, Honor Society of Nursing, Nu Mu Chapter? Here's a chance to reminisce as well as congratulate those who have achieved as much success as you have.

Induction will, once again, take place at Quiet Cannon in Montebello, CA on **Sunday, May 20th** from **12:30pm to 3:00pm in the Camino Room**. We will be inviting candidates from the undergraduate BSN program, the distance program, the accelerated program and the MSN program.

We are inviting all existing members to join in the celebration. We will be serving lunch during the ceremony and there is a small fee of \$28. If you are planning to attend, please complete the tear-off section below and mail the form with your check to:

Dolores Greenwood
2032 W. 84th Street
Los Angeles, CA 90047

For any questions, do not hesitate to contact **Dolores Greenwood at (323) 759-1370**.

Thank you and hope to see you there!

2007 Induction Ceremony
Quiet Cannon, Camino Room
Montebello, California

May 20, 2007
Sunday
12:30- 3:00 pm

Name: _____ **Nu Mu member:**___ **Non- member:** ___

Address: _____

Contact Information: _____

Yes, I plan to attend: _____
 Amount: _____

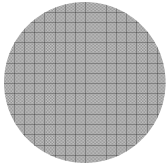
No, I cannot attend but would like to donate to the Scholarship fund: _____ Amount: _____

No, I cannot attend: _____

THANK YOU!



March



We welcome comments and suggestions or if you would like to contribute to this newsletter please contact Larissa Africa, President-Elect

E-Mail:

lafrica@chla.usc.edu

Sun	Mon	Tue	Wed	Thu	Fri	Sat
				1	2	3
4	5	6	7	8	9	10
11	12	13	14	15	16	17
18	19	20	21	22 Due Date: Applications for elections to Yuri Ogawa	23	24
25 Nu Mu Board Meeting @ CSULA: 6:00- 8:00- pm ALL ARE WELCOME!	26	27	28	29	30	31

April

Sun	Mon	Tue	Wed	Thu	Fri	Sat
1	2	3	4	5	6	7
8	9	10	11	12	13	14
15	16 Due date: Scholarship Application	17	18	19	20	21
22	23	24	25	26	27	28
29	30					

We're on the Web!

See us at:

<http://www.geocites.com/numu chapter>

May

Sun	Mon	Tue	Wed	Thu	Fri	Sat
		1	2	3	4	5
6 National Nurses Week	7 Due Date: Research Grant Application	8	9	10	11	12
13	14 Evidence-Based Research Day: CSULA 8:00am- 2:00 pm Golden Eagle Ballroom	15	16	17	18	19 Induction Ceremony Quiet Cannon Montebello, CA 12:30-3:00 pm
20	21	22	23	24	25	26
27	28	29	30	31		