



**Honor Society of Nursing
Sigma Theta Tau International**

Fall 2007

NU MU Chapter

California State University, Los Angeles

Nu Mu Chapter Board of Directors:

Larissa Africa-President

Susan De Pietro-President Elect

Benson Yeung-Vice President

Susan Client-Secretary

Kris Hillary-Treasurer



President's Message

By Larissa Africa, BSN, RN

4 years ago I stood, before you, as an inductee of the Nu Mu Chapter of the Nursing Honor Society. Today, I stand before you as your Nu Mu President.

I am thankful for the opportunity to serve you, but I will also miss serving under our past-president, Suzanne Taylor. Her leadership has raised the bar for all of us who will try to emulate her guidance, professionalism, and dedication.

I look forward to working with the new and returning board members, whose leadership, experience, and knowledge will undoubtedly uphold the mission and values of the Nursing Honor Society. I would like to extend my congratulations to the Nu Mu Board Members for 2007-2008:

Individual Highlights:

President's Message	1
Treasurer Report	2
Special Event	3-4
Induction News	5
Scholarship	5
Calendar of Events	6

President-Elect
Vice President
Secretary
Treasurer
Faculty Counselor
Bylaws
Eligibility
Membership
Leadership Succession Committee

Research
Newsletter
Heritage/Archives
Program
Scholarship/Awards
Fundraising
Chapter Key Award

Susan DePietro
Benson Yeung
Susan Cline
Kris Hillary
Jon Christensen
Roslyn Nott
Paula Vuckovich
Dolores Greenwood
Betsy Osborne
Patty Hedrick
Lisa Perzyna- Vallejo
Lorie Judson
Ali Tayyeb
Mimie Lorca
Benson Yeung
Lisa Perzyna-Vallejo
Lora Barton
Susan DePietro

We have successfully completed the transition of officers in June 2007. We are in the process of finalizing strategic goals for the year, which we will share with you in the next edition of our newsletter.

Continued on p. 2

Continued... President's Message

Currently, we have the following events scheduled, which I hope you will take as opportunities to grow in our profession:

- Southern California Research, Nursing Odyssey scheduled for October 18-10 in San Diego, California.
- Our Fall Program is scheduled to take place in the month of November with the induction of Nurse Leaders.
- All are invited to our Board meetings, which are scheduled in the month of September, January, and March.
- Our Research Day is also in the process of being scheduled early in 2008
- Induction is scheduled for the month of May of next year. We will continue to keep you posted on specific dates for all of our activities. I am looking forward to seeing more of you during our different functions.

We depend on you as members of the Nu Mu Chapter, not only for the success of our chapter will, but also to improve the health of all through research, education, scholarship in practice, and leadership.

Again, I look forward to serving as your President. If you have questions, comments, or if interest in being more involved in our chapter, please do not hesitate to contact me. I can be reached at 626-202-9068 or by email at lafrica@chla.usc.edu.

Note from the Treasurer **Kris Hillary, MSN, RN**

Sigma Theta Tau Nu Mu Chapter has current assets of \$43,287.

Checking Account	\$3,332.87
Savings Account	\$10,092.10
Restricted Fund	\$10,000.00
Fed. Money Market Fund	\$9,922.10
Prime Money Market Fund	<u>\$9,940.42</u>
Total	\$43,287.49

The budget for 2006-07 was \$14,170. The fiscal year ended on a positive note with \$16,816 in total revenue due to greater than anticipated membership dues and fund raising.

This year \$4800 in scholarships were given. Graduate students Alison Hadziosmanovic, Sandra Dawson and Ya-Min Cheng each received \$1000. Undergraduate student Alyssa Bouley received \$900 and Hawa Mapara received the Marilyn Friedman Scholarship of \$900. The chapter used the extra revenues from this year to join the CSULA Alumni Society in giving a very successful Spring Research Conference and to make a capital investment by purchasing an LCD projector for future educational activities.

Other major activities funded by the chapter were the Fall Education program, sending a representative to the Leadership Conference at Sigma Theta Tau International in Indianapolis, providing tuition for CSULA students to attend the Odyssey Research Conference and underwriting the spring chapter induction ceremonies.

Respectfully submitted,
Kris Hillary

Save The Date!!!

Nu Mu Chapter Fall Program

We would like to invite all members and non-members to Nu Mu's 2007 Fall Program. This year, we are proud to have Dean Beatrice Yorker as our speaker. Dean Yorker, a nurse and an attorney will present her published research on serial murder by nurses, covert video surveillance of Munchausen Syndrome by Proxy, and the role of forensic nurses in detecting and stopping such crimes. Strategies to prevent crimes in the clinical arena and how to collect evidence if a crime is suspected will be discussed.

We will be providing 2.0 CEUs for the session.

Also, please help us welcome new members as we induct them as Nurse Leaders into our chapter.

Program fee including brunch:

Students: \$20

Honor Society Members: \$25

Non-members: \$30

Location

Quiet Cannon Country Club

901 N. Via San Clemente, Montebello, CA

(323) 724- 4500

Time: 9:00 am- 12:00 noon

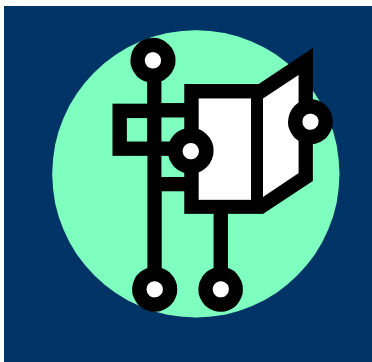
If you are interested in attending, please mail the attached for form and your check to:

STT NuMu Chapter C/O Benson Yeung, Program Chair

535 North Glenwood Ave.

Glendora, CA 91741

For further information, contact:
Benson Yeung at (626) 378-5124
bensonyeungrn@yahoo.com



Nursing Odyssey in Sunny San Diego

By: Yuri Ogawa, MSN, RN

Attention all Nu Mu members, CSULA friends and students: **Save the Date!!**

**Honor Society of Nursing, Sigma Theta Tau International
12th Joint Southern California Chapters' Conference
Nursing Odyssey 2007: Building a Healthy Profession,
Community, Nation and World**

When: October 18-19th, 2007

Where: Sheraton San Diego Hotel
1433 Camino del Rio South
San Diego, CA 92108

CE Hours available

For more information go to www.omicrondelta.net (or)
contact marlene.s.ruiz@kp.org for registration information

Attention...

Are you looking for an opportunity to get involved? Do you have ideas or issues you would like to discuss and work with others who have similar ideas? If so we are looking for you. Our committees have several positions available that would meet your needs and we would love your involvement and contribution. Please contact Larissa Africa at lafrica@chla.usc.edu for committee positions available.

Don't forget to sign up to receive the next issue of Sigma Theta Tau, Nu Mu Chapter Newsletter via **email**. Help us to help you and our chapter function more efficiently. Contact lafrica@chla.usc.edu with the email address for which you would like to receive your next issue.



Another Successful Induction
Dolores Greenwood, MSN, RN
Membership Chair

On May 20, 2007, the Nu Mu Chapter of Sigma Theta Tau International inducted 52 new members. There were 25 undergraduate and 27 graduate students. The induction ceremony was held at Quiet Cannon Country Club in Montebello. Dr. Patricia Chin had a few words of wisdom for the new members as well as a couple of challenges.

We, as a chapter, are hoping that the new members accept that challenge: to be *active* members of Sigma Theta Tau.

The five scholarship winners were also present at the ceremony. The recipients were Alyssa Bouley, Mindy Chen, Sandra Dawson, Alison Hadziosmanovic and Hawa Mapara.

Suzanne Taylor, President of our chapter, inducted the new members, presented the newly elected board, presented gifts of appreciation and then turned the gavel over to Larissa Africa, our newly elected President of the Nu Mu Chapter.

Larissa welcomed all the new members and reiterated the challenge that Dr. Chin presented: to become active members of Sigma Theta Tau.

I look forward to an exciting 2 years and it is my sincere hope that all our Chapter’s members accept the challenge of actively making a difference in our chapter and our community.

Congratulations to the Scholarship Winners!

By Lisa Vallejo BSN, RN
 Chair, Scholarship Committee

At the Spring Induction Ceremony on May 20, 2007, the Nu Mu Chapter had the opportunity to recognize outstanding nursing students, awarding 4 scholarships to support their nursing education. Due to the generosity of many donors, Nu Mu was able to award \$1000.00 scholarships to three graduate students and one \$900.00 scholarship to an undergraduate student. The following students received awards:



Mindy Cheng	Graduate
Sandra Dawson	Graduate
Alison Hadziosmanovic	Graduate
Alyssa Bouley	Undergraduate

The scholarship committee was also very pleased to award the 6th recipient of the **Marilyn Friedman Scholarship** to **Hawa Mapara**. With Dr. Marilyn Friedman’s generous donation, the Nu Mu Chapter was able to present Ms. Mapara with a \$900.00 scholarship.

Congratulations to all of the scholarship recipients and we wish you the best of luck in your academic endeavors.

A very special thank you goes to the members of the Scholarship Committee: Kris Hillary and Larissa Africa. Thank you for all of your time reviewing applications and making the difficult decisions.

Calendar of Events

2007

- October 18-19 Southern California Chapters' Conference
Nursing Odyssey San Diego, California
- November 2-7 Sigma Theta Tau International Biennium
Baltimore Convention Center Baltimore, Maryland
- November 10 Nu Mu Chapter Fall Program
Quiet Cannon Montebello, California

2008

- January 7 Nu Mu Board Meeting (all are invited!)
6:00- 8:00 pm
California State University Los Angeles
- February 11 Nu Mu Research Day
More information to come!
- March 24 Nu Mu Board Meeting (all are invited)
6:00- 8:00 pm
California State University Los Angeles
- May 18 Induction Ceremony
12:00 noon- 3:00 pm
Quiet Cannon Montebello, California

**We welcome
comments and
suggestions or if you
would like to
contribute to this
newsletter please
contact Larissa Africa,
President-Elect**

E-Mail:
lafrica@chla.usc.edu